



# ANGELL REFERRAL GUIDE

Angell Animal Medical Center | 350 South Huntington Avenue | Boston, MA 02130 | 617-522-5011  
MSPCA-Angell West | 293 Second Avenue | Waltham, MA 02451 | 781-902-8400  
Angell at Essex | 565 Maple Street | Danvers, MA 01923 | 978-304-4648  
MSPCA-Angell Clinics – Low-cost Clinics | Boston, Methuen, Centerville | [angell.org/clinics](https://angell.org/clinics)

---

# CONTENTS

---

Service Contact Information.....	2
Veterinarian Contact Information.....	3
Referrals and Pharmacy.....	5
Outpatient Abdominal Ultrasound and Image Transfer Express.....	6
Referring Veterinarian Portal.....	8
Clinical Articles.....	9
MSPCA-Angell West.....	10
Angell at Essex.....	11
MSPCA-Angell Clinics.....	12
<b>ANGELL SERVICES</b>	
24/7 Emergency & Critical Care.....	14
Anesthesiology.....	16
Avian & Exotic Medicine.....	17
Behavior.....	18
Cardiology.....	19
Dentistry.....	20
Dermatology.....	21
Diagnostic Imaging.....	22
Internal Medicine.....	23
I-131 Treatment Program.....	25
Neurology.....	26
Oncology.....	27
Ophthalmology.....	29
Pathology.....	30
Pathology: Necropsy.....	31
Surgery.....	32
Urgent Care.....	34

---

# THANK YOU FOR THE TRUST YOU PLACE IN ANGELL

---

We value your feedback as our referring partner in providing quality, comprehensive care for your patients and clients. We are pleased to offer our services with the convenience of two full-service hospital locations — Angell in Boston and MSPCA-Angell West in Waltham — as well as a limited-service clinic in Danvers, MA (Angell at Essex) and the MSPCA-Angell clinics at Boston, Nevins Farm (Methuen, MA), and on Cape Cod (Centerville, MA).

This Referral Guide contains important information to ensure you and your clients have a positive experience using the services at any of our locations. We strive to offer the best specialized veterinary care while providing the one-on-one compassion and customer service your clients and patients deserve. Angell's staff is committed to working with you to ensure the best overall health of your patient.

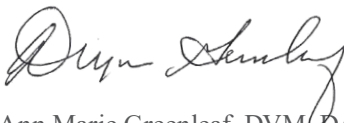
Angell remains focused on investing in three crucial areas: advanced medical equipment and technology, space renovation, and the endowment of mission-based financial aid programs to help less fortunate pet owners receive life-saving care for their animals.

Please note that Angell is open on major holidays, including Martin Luther King, Jr. Day, President's Day, Indigenous Peoples' Day, and Veterans Day.

Thank you for your continued referrals to Angell Animal Medical Center. I hope you will use Angell as a resource, and I encourage you to call or email our specialists with questions when faced with a complex case, regardless of whether it is a referral.

If you have any questions, please contact me at 617-541-5042 or via email at [agreenleaf@angell.org](mailto:agreenleaf@angell.org).

Sincerely,



Ann Marie Greenleaf, DVM, DACVECC-SA  
Chief of Staff  
*Angell Animal Medical Center*





# SERVICE CONTACT INFORMATION

Phone numbers apply for both Boston and Waltham

## 24/7 EMERGENCY & CRITICAL CARE

BOSTON: 617-522-5011 | WALTHAM: 781-902-8400

### BOSTON AND WALTHAM

#### AVIAN & EXOTIC MEDICINE

Phone: 617-989-1561 Fax: 617-989-1613

[avianexotic@angell.org](mailto:avianexotic@angell.org)

[angell.org/avianandexotic](http://angell.org/avianandexotic)

#### BEHAVIOR

Phone: 617-989-1520 Fax: 617-989-1627

[behavior@angell.org](mailto:behavior@angell.org)

[angell.org/behavior](http://angell.org/behavior)

#### DERMATOLOGY

Phone: 617-524-5733 Fax: 617-989-1613

[dermatology@angell.org](mailto:dermatology@angell.org)

[angell.org/dermatology](http://angell.org/dermatology)

#### DIAGNOSTIC IMAGING

Phone: 617-522-7282 Fax: 617-989-1617

[diagnosticimaging@angell.org](mailto:diagnosticimaging@angell.org)

[angell.org/diagnosticimaging](http://angell.org/diagnosticimaging)

#### INTERNAL MEDICINE & OUTPATIENT ULTRASOUND

Phone: 617-541-5186 Fax: 617-989-1657

[internalmedicine@angell.org](mailto:internalmedicine@angell.org)

[angell.org/internalmedicine](http://angell.org/internalmedicine)

#### SURGERY

Phone: 617-541-5048 Fax: 617-989-1660

[surgery@angell.org](mailto:surgery@angell.org)

[angell.org/surgery](http://angell.org/surgery)

#### URGENT CARE\*

Phone: 781-902-8400

[urgentcare@angell.org](mailto:urgentcare@angell.org)

[angell.org/urgentcare](http://angell.org/urgentcare)

### BOSTON ONLY

#### ANESTHESIOLOGY

Phone: 617-541-5048 Fax: 617-989-1660

[anesthesia@angell.org](mailto:anesthesia@angell.org)

[angell.org/anesthesia](http://angell.org/anesthesia)

#### CARDIOLOGY

Phone: 617-541-5038 Fax: 617-989-1653

[cardiology@angell.org](mailto:cardiology@angell.org)

[angell.org/cardiology](http://angell.org/cardiology)

#### DENTISTRY

Phone: 617-522-7282 Fax: 617-522-4885

[dentistry@angell.org](mailto:dentistry@angell.org)

[angell.org/dentistry](http://angell.org/dentistry)

#### NEUROLOGY

Phone: 617-541-5140 Fax: 617-989-1666

[neurology@angell.org](mailto:neurology@angell.org)

[angell.org/neurology](http://angell.org/neurology)

#### ONCOLOGY

Phone: 617-541-5136 Fax: 617-989-1668

[oncology@angell.org](mailto:oncology@angell.org)

[angell.org/oncology](http://angell.org/oncology)

#### OPHTHALMOLOGY

Phone: 617-541-5095 Fax: 617-989-1647

[ophthalmology@angell.org](mailto:ophthalmology@angell.org)

[angell.org/eyes](http://angell.org/eyes)

#### PATHOLOGY (CLINICAL & ANATOMIC)\*\*

Phone: 617-541-5014 Fax: 617-522-7356

[pathology@angell.org](mailto:pathology@angell.org)

[angell.org/lab](http://angell.org/lab)

\* Available only in Waltham

\*\* Service is located in Boston, but serves both Boston & Waltham



# VETERINARIAN CONTACT INFORMATION

Chief of Staff: Ann Marie Greenleaf, DVM, DACVECC | [agreenleaf@angell.org](mailto:agreenleaf@angell.org)

## REFERRAL ASSISTANCE

### Boston

Phone: 617-522-5011

Fax: 617-989-1635

### Waltham

Phone: 781-902-8400

Fax: 781-622-1410

## 24/7 EMERGENCY & CRITICAL CARE, BOSTON

[angell.org/emergency](http://angell.org/emergency)

[emergency@angell.org](mailto:emergency@angell.org)

Phone: 617-522-5011 Fax: 617-989-1633

### Alison Allukian, DVM

[aallukian@angell.org](mailto:aallukian@angell.org)

### Laura Badeski, DVM

[lbadeski@angell.org](mailto:lbadeski@angell.org)

### Kiko Bracker, DVM, DACVECC-SA

Service Director

[kbracker@angell.org](mailto:kbracker@angell.org)

### David Carabetta, DVM, DACVECC-SA

[dcarabetta@angell.org](mailto:dcarabetta@angell.org)

### Callie Cazlan, DVM

[ccazlan@angell.org](mailto:ccazlan@angell.org)

### Elton Chan, DVM

[echan@angell.org](mailto:echan@angell.org)

### Nicole D'Addezio, VMD

[ndaddezio@angell.org](mailto:ndaddezio@angell.org)

### Rose Feldman, VMD

[rfeldman@angell.org](mailto:rfeldman@angell.org)

### Scout Ford, VMD

[sford@angell.org](mailto:sford@angell.org)

### Molly Graham, DVM

[mgraham@angell.org](mailto:mgraham@angell.org)

### Hana Huff, DVM

[hhuff@angell.org](mailto:hhuff@angell.org)

### Audrey Koid, DVM, DACVECC-SA

[akoid@angell.org](mailto:akoid@angell.org)

### Brandi Lauer, DVM

[blauer@angell.org](mailto:blauer@angell.org)

### Aiden Masri, DVM

[amasri@angell.org](mailto:amasri@angell.org)

### Katherine McKean, DVM

[kmckean@angell.org](mailto:kmckean@angell.org)

### Patrick Odom, DVM

[podom@angell.org](mailto:podom@angell.org)

### Abbey Petronzio, DVM

[apetronzio@angell.org](mailto:apetronzio@angell.org)

### Nathalie Suci, DVM

[nsuci@angell.org](mailto:nsuci@angell.org)

### Julia VanDerslice, DVM

[jvanderslice@angell.org](mailto:jvanderslice@angell.org)

### Sam Vitali, DVM

[svitali@angell.org](mailto:svitali@angell.org)

### Megan Whelan

DVM, DACVECC-SA, CVA

Chief Medical Officer / Service Director

[mwhelan@angell.org](mailto:mwhelan@angell.org)

## 24/7 EMERGENCY & CRITICAL CARE, WALTHAM

Phone: 781-902-8400

### Jordana Fetto, DVM

[jfetto@angell.org](mailto:jfetto@angell.org)

### Mina Gergis, DVM

[mgergis@angell.org](mailto:mgergis@angell.org)

### Ashley Lockwood, DVM, DACVECC-SA

[alockwood@angell.org](mailto:alockwood@angell.org)

### Amanda Lohin, DVM

[alohin@angell.org](mailto:alohin@angell.org)

### Aiden Masri, DVM

[amasri@angell.org](mailto:amasri@angell.org)

### Courtney Peck, DVM, DACVECC-SA

[cpeck@angell.org](mailto:cpeck@angell.org)

### Lena Seegars, DVM

[lseegars@angell.org](mailto:lseegars@angell.org)

### Jessica Seid, DVM

[jseid@angell.org](mailto:jseid@angell.org)

### Catherine Sumner

DVM, DACVECC-SA

Chief of Staff, Waltham

[csumner@angell.org](mailto:csumner@angell.org)

## ANESTHESIOLOGY

[angell.org/anesthesia](http://angell.org/anesthesia)

[anesthesia@angell.org](mailto:anesthesia@angell.org)

Phone: 617-541-5048 Fax: 617-989-1660

### Becca Reader, DVM, DACVAA

[rreader@angell.org](mailto:rreader@angell.org)

## AVIAN & EXOTIC MEDICINE BOSTON & WALTHAM

[angell.org/avianandexotic](http://angell.org/avianandexotic)

[avianexotic@angell.org](mailto:avianexotic@angell.org)

Phone: 617-989-1561, Fax: 617-989-1613

### Elena Buenrostro, DVM

[ebuenrostro@angell.org](mailto:ebuenrostro@angell.org)

### Brendan Noonan, DVM, DABVP

(Avian Practice)

[bnoonan@angell.org](mailto:bnoonan@angell.org)

### Anne Staudenmaier, VMD, DABVP

(Avian Practice)

Waltham

[astaudenmaier@angell.org](mailto:astaudenmaier@angell.org)

### Patrick Sullivan, DVM, DABVP

(Avian Practice)

[psullivan@angell.org](mailto:psullivan@angell.org)

## BEHAVIOR

### BOSTON & WALTHAM

[angell.org/behavior](http://angell.org/behavior)

[behavior@angell.org](mailto:behavior@angell.org)

Phone: 617-989-1520, Fax: 617-989-1627

### Terri Bright, Ph.D., BCBA-D, CAAB

Boston & Waltham

[tbright@angell.org](mailto:tbright@angell.org)

### Allyson Salzer, Ph. D., BCBA-D

Waltham

[asalzer@angell.org](mailto:asalzer@angell.org)

## CARDIOLOGY

[angell.org/cardiology](http://angell.org/cardiology)

[cardiology@angell.org](mailto:cardiology@angell.org)

Phone: 617-541-5038 Fax: 617-989-1653

### Alice Chirn, MA, BVetMed

[achirn@angell.org](mailto:achirn@angell.org)

### Katie Hogan, DVM, DACVIM

(Cardiology)

[khogan@angell.org](mailto:khogan@angell.org)

### Terry Huh, DVM, DACVIM

(Cardiology)

[thuh@angell.org](mailto:thuh@angell.org)

### Clint Lynn, DVM

[clynn@angell.org](mailto:clynn@angell.org)

## DENTISTRY

[angell.org/dentistry](http://angell.org/dentistry)

[dentistry@angell.org](mailto:dentistry@angell.org)

Phone: 617-522-7282 Fax: 617-522-4885

### Shawn Han, DVM

[shan@angell.org](mailto:shan@angell.org)

### Meghan Keefe, DVM

[mkeefe@angell.org](mailto:mkeefe@angell.org)

### Jessica Riehl, DVM, DAVDC

[jriehl@angell.org](mailto:jriehl@angell.org)

### Joyce Tai, DVM, DAVDC

[jtai@angell.org](mailto:jtai@angell.org)

## DERMATOLOGY

### BOSTON & WALTHAM

[angell.org/dermatology](http://angell.org/dermatology)

[dermatology@angell.org](mailto:dermatology@angell.org)

Phone: 617-524-5733 Fax: 617-989-1613

### Klaus Loft, DVM

[kloft@angell.org](mailto:kloft@angell.org)

### Meagan Painter, DVM, DACVD

Waltham

[mpainter@angell.org](mailto:mpainter@angell.org)

### Brooke Simon, DVM

[bsimon@angell.org](mailto:bsimon@angell.org)

# VETERINARIAN CONTACT INFORMATION

## DIAGNOSTIC IMAGING

[angell.org/diagnosticimaging](http://angell.org/diagnosticimaging)  
[diagnosticimaging@angell.org](mailto:diagnosticimaging@angell.org)  
Phone: 617-522-7282 Fax: 617-989-1617

**Naomi Ford, DVM, DACVR**  
[nford@angell.org](mailto:nford@angell.org)

**Steven Tsai, DVM, DACVR**  
[stsai@angell.org](mailto:stsai@angell.org)

**Ruth Van Hatten, DVM, DACVR**  
[rvanhatten@angell.org](mailto:rvanhatten@angell.org)

**INTERNAL MEDICINE  
BOSTON & WALTHAM**  
[angell.org/internalmedicine](http://angell.org/internalmedicine)  
[internalmedicine@angell.org](mailto:internalmedicine@angell.org)  
Phone: 617-541-5186 Fax: 617-989-1657

**Mario Barenas, DVM**  
[mbarenas@angell.org](mailto:mbarenas@angell.org)

**Nyla Bent, DVM**  
[nbent@angell.org](mailto:nbent@angell.org)

**Douglas Brum, DVM**  
[dbrum@angell.org](mailto:dbrum@angell.org)

**Maureen Carroll, DVM, DACVIM-SA**  
[mccarroll@angell.org](mailto:mccarroll@angell.org)

**Zach Crouse, DVM, DACVIM-SA**  
[zcrouse@angell.org](mailto:zcrouse@angell.org)

**Lisa Gorman, DVM, DACVIM-SA**  
Waltham  
[lgorman@angell.org](mailto:lgorman@angell.org)

**Jessica Hayes, DVM**  
[jhayes@angell.org](mailto:jhayes@angell.org)

**Shawn Kearns, DVM, DACVIM-SA**  
[skearns@angell.org](mailto:skearns@angell.org)

**Evan Mariotti, DVM, DACVIM-SA**  
[emariotti@angell.org](mailto:emariotti@angell.org)

**Susan O'Bell, DVM, MPH, DACVIM  
(Internal Medicine)**  
Service Director  
[sobell@angell.org](mailto:sobell@angell.org)

**Juliana Picard, DVM**  
[jpicaard@angell.org](mailto:jpicaard@angell.org)

**Ursula Ramalho, DVM**  
[uramalho@angell.org](mailto:uramalho@angell.org)

**Annie Sheu-Lee, DVM**  
[asheulee@angell.org](mailto:asheulee@angell.org)

**Lindsay Summers, DVM**  
[lsommers@angell.org](mailto:lsommers@angell.org)

**Daniela Vrabelova Ackley  
DVM, DACVIM-SA**  
Waltham  
[dvrabelova@angell.org](mailto:dvrabelova@angell.org)

## NEUROLOGY

[angell.org/neurology](http://angell.org/neurology)  
[neurology@angell.org](mailto:neurology@angell.org)  
Phone: 617-541-5140 Fax: 617-989-1666

**Rob Daniel, DVM, DACVIM  
(Neurology)**  
[rdaniel@angell.org](mailto:rdaniel@angell.org)

**Michele James  
DVM, DACVIM (Neurology)**  
Service Director  
[mjames@angell.org](mailto:mjames@angell.org)

**Jennifer Michaels  
DVM, DACVIM (Neurology)**  
[jmichaels@angell.org](mailto:jmichaels@angell.org)

**ONCOLOGY**  
[angell.org/oncology](http://angell.org/oncology)  
[oncology@angell.org](mailto:oncology@angell.org)  
Phone: 617-541-5136 Fax: 617-989-1668

**Kristine Burgess, DVM, MS, DACVIM  
(Medical Oncology)**  
[kburgess@angell.org](mailto:kburgess@angell.org)

**Megan Cray, VMD, DACVS-SA  
(Surgical Oncology)**  
[mcray@angell.org](mailto:mcray@angell.org)

**Kendra Lyons, DVM  
(Practice Limited to Medical Oncology)**  
[klyons@angell.org](mailto:klyons@angell.org)

**Jillian Walz, DVM, DACVIM  
(Medical Oncology), DACVR  
(Radiation Oncology)**  
[jwalz@angell.org](mailto:jwalz@angell.org)

**OPHTHALMOLOGY**  
[angell.org/eyes](http://angell.org/eyes)  
[ophthalmology@angell.org](mailto:ophthalmology@angell.org)  
Phone: 617-541-5095 Fax: 617-989-1647

**Daniel Biro, DVM, DACVO**  
[dbiros@angell.org](mailto:dbiros@angell.org)

**Martin Coster, DVM, MS, DACVO**  
[mcoster@angell.org](mailto:mcoster@angell.org)

**PATHOLOGY**  
[angell.org/lab](http://angell.org/lab)  
[pathology@angell.org](mailto:pathology@angell.org)  
Phone: 617-541-5014 Fax: 617-522-7356

**Patty Ewing, DVM, MS, DACVP**  
Service Director  
[pewing@angell.org](mailto:pewing@angell.org)

**Pamela Mouser, DVM, MS, DACVP**  
[pmouser@angell.org](mailto:pmouser@angell.org)

## SURGERY

**BOSTON & WALTHAM**  
[angell.org/surgery](http://angell.org/surgery)  
[surgery@angell.org](mailto:surgery@angell.org)  
Phone: 617-541-5048 Fax: 617-989-1660

**Lori Agulian, DVM**  
[lagulian@angell.org](mailto:lagulian@angell.org)

**Kristen Behrens, DVM**  
[kbehrens@angell.org](mailto:kbehrens@angell.org)

**Sue Casale, DVM, DACVS-SA**  
[scasale@angell.org](mailto:scasale@angell.org)

**Caroline Choi, DVM**  
[cchoi@angell.org](mailto:cchoi@angell.org)

**Kathryn Heidgerd, VDM**  
[kheidgerd@angell.org](mailto:kheidgerd@angell.org)

**Michael Pavletic, DVM, DACVS-SA**  
Service Director  
[mpavletic@angell.org](mailto:mpavletic@angell.org)

**Jennifer Peterson-Levitt  
DVM, DACVS-SA**  
Boston & Waltham  
[jpetersonlevitt@angell.org](mailto:jpetersonlevitt@angell.org)

**Nicholas Trout  
MA, VET MB, DACVS-SA, ECVS**  
[ntrout@angell.org](mailto:ntrout@angell.org)

**URGENT CARE  
WALTHAM**  
[angell.org/urgentcare](http://angell.org/urgentcare)  
[urgentcare@angell.org](mailto:urgentcare@angell.org)  
Phone: 781-902-8400

**Natasha Pakravan, DVM**  
[npakravan@angell.org](mailto:npakravan@angell.org)

**Julie Shields, DVM**  
[jshields@angell.org](mailto:jshields@angell.org)

**ANGELL AT ESSEX  
DANVERS**  
[angell.org/essex](http://angell.org/essex)  
[essex@angell.org](mailto:essex@angell.org)  
Phone: 978-304-4648

**Heidi Broadley, DVM**  
[hbroadley@angell.org](mailto:hbroadley@angell.org)

**Sara Gardiner, DVM**  
[sgardiner@angell.org](mailto:sgardiner@angell.org)

**ANGELL IMAGE TRANSFER  
EXPRESS**

**Boston & Waltham**  
[images@angell.org](mailto:images@angell.org)

---

# REFERRAL FORMS

---

Boston Phone: 617-522-5011 | Boston Fax: 617-989-1635 | Waltham Phone: 781-902-8400 | Waltham Fax: 781-622-1410

We value our referring partners, and the trust that you place in Angell when referring your clients and we encourage you to contact our specialty services with any questions or requests. We look forward to hearing from you and appreciate your support and referrals.

Referral forms for Angell in Boston and Waltham and MSPCA-Angell Clinics in Boston, Cape Cod, and Nevins Farm (Methuen) are available at [angell.org/referrals](https://angell.org/referrals).



---

# PHARMACY

---

Boston Phone: 617-524-5700 | Boston Fax: 617-524-5604 | Waltham Phone: 781-902-8400  
[pharmacy@angell.org](mailto:pharmacy@angell.org) | [angell.org/pharmacy](https://angell.org/pharmacy)

Angell has implemented a new prescription refill process. Approval of refills may take up to four business days. Please encourage your clients to review their pets' Angell-prescribed medications and submit any requests for renewal a week in advance, particularly for prescriptions that are expired or without remaining refills that will require approval of the prescribing veterinarian.

Please visit [angell.org/pharmacy](https://angell.org/pharmacy) to view refill guidelines.

## BOSTON PHARMACY HOURS

Mon-Fri: 8:00am – 8:00pm

Saturday: 8:30am – 5:00pm

Sunday and Holidays: 9:00am – 5:00pm

## WALTHAM PHARMACY HOURS

Daily: 10:00am – 6:00pm

\*Both locations are closed on Thanksgiving and Christmas.





# OUTPATIENT ABDOMINAL ULTRASOUND

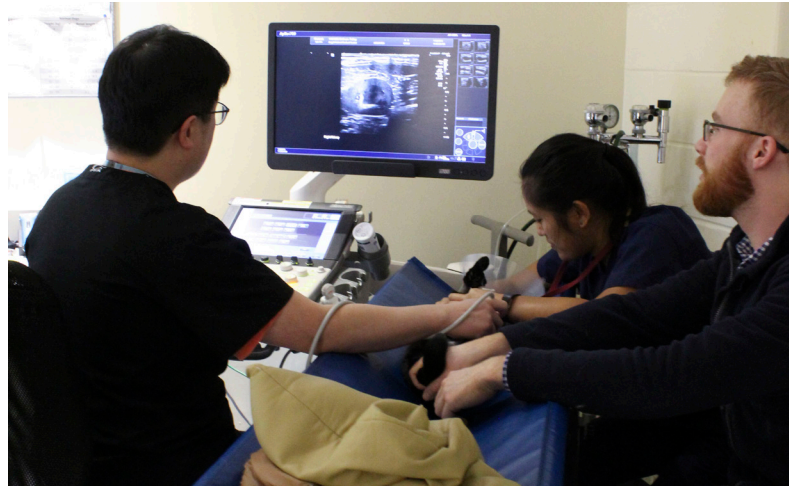
Waltham Phone: 781-902-8400 | Waltham Fax: 781-622-1410 | [diagnosticimaging@angell.org](mailto:diagnosticimaging@angell.org) | [angell.org/ultrasound](http://angell.org/ultrasound)

We are pleased to share that Angell offers outpatient abdominal ultrasound exams in Waltham for stable dog and cat patients. Following this information sheet outlining the service, you will find a referral form to complete before your client schedules an appointment. If you need additional forms, please visit [angell.org/ultrasound](http://angell.org/ultrasound) or contact us at 781-902-8400, and we can send them via email or fax.

This service is available to all of our referring hospitals Monday to Sunday at Angell West. Many of you already use the services of traveling ultrasonographers; however, they may work on a periodic schedule that does not always serve the immediate needs of your client or patient. We hope to fill that niche for you.

We would like to emphasize that this service is not designed for sick patients who need hospital admission. Those patients should be referred directly to one of our direct patient care services. However, should we discover an urgent situation during the ultrasound study (e.g., intestinal obstruction, free air, gallbladder mucocele, or suspected hemorrhagic effusion), we will consult with you and your client and expedite emergency admission if that is requested by the client.

Fine-needle aspirates, cystocentesis, or other sampling procedures are **NOT** done during outpatient abdominal ultrasounds. If you would like your patient to have such a procedure done, please refer them for an internal medicine appointment. We can provide an estimate and then set them up for any procedures at the time of the appointment, and often procedures can be done the same day. If you feel that pre-visit oral sedation would assist us in being able to complete an ultrasound on an anxious patient, please prescribe this from your clinic and instruct the owner in administration. Patients that require injectable sedation should be referred to the Emergency Service or Internal Medicine Service.



There is a weight limit of 60 lbs for dogs for the outpatient abdominal ultrasound service. This is because dogs over this weight generally need sedation to achieve quality images due to their large size and abdominal muscle tone. Dogs over this weight limit should be referred for an internal medicine appointment. Sedated ultrasound can be done the same day as a West internal medicine appointment in most cases.

We look forward to providing outpatient abdominal ultrasound services to you and your clients. Please call us with any questions or concerns. To schedule an appointment, please provide your client's contact information on the completed form, and we will contact your client to arrange an appointment time. After submitting the form, you or your client can reach us at 781-902-8400 between 8:00am to 6:00pm Monday through Friday to finalize appointment arrangements.

## ANGELL IMAGE TRANSFER EXPRESS

Angell Image Transfer Express is available for both Boston and Waltham locations. Referring veterinarians can email diagnostic images for any Angell service to [images@angell.org](mailto:images@angell.org), which auto-uploads images into Angell's image central repository. This repository makes images quickly and easily retrievable by all Angell clinicians, avoids confusion over where to send images, and prevents the need to resend images when multiple specialists collaborate on a case. Please use [images@angell.org](mailto:images@angell.org) to send diagnostic images of referred cases (this is not for online imaging consultations/fee-based radiograph interpretation).

## SUBMISSION GUIDELINES FOR IMAGES@ANGELL.ORG

Please email images to [images@angell.org](mailto:images@angell.org) and include them in the email subject line (in this order):

- the PATIENT'S FIRST NAME (in all caps)
- the owner's first and last name
- a 1–3 word description of the case
- the Angell doctor's last name

### EXAMPLE:

**"FIDO, Bob Smith, lung tumor, Talbott"**

# OUTPATIENT ABDOMINAL ULTRASOUND

Waltham Phone: 781-902-8400 | Waltham Fax: 781-622-1410 | [diagnosticimaging@angell.org](mailto:diagnosticimaging@angell.org) | [angell.org/ultrasound](http://angell.org/ultrasound)

Angell offers outpatient abdominal ultrasound exams in Waltham with our internists as a service to our referring veterinarians.

## GUIDELINES FOR REFERRAL

- Non-critical patients only; those in need of urgent medical, surgical, or emergency care should be referred to one of those services directly
- This service does not offer fine-needle aspirates or sedation. If either sedation or aspirates are indicated for this exam, the client should make an appointment through our Internal Medicine service at 617-541-5186 (Boston) or 781-902-8400 (Waltham).
- Please complete and fax the following form (see next page) to 617-989-1617 or submit it online at [angell.org/referrals](http://angell.org/referrals). Once we receive the form, we will contact the client to schedule an appointment. If the client prefers to call us at their convenience, please indicate this on the form. If you prefer, you may make the appointment for your client by calling 781-902-8400.
- Please clarify with your client that an Internal Medicine consult with the client is not part of the outpatient ultrasound service. A separate appointment must be made for a consult.

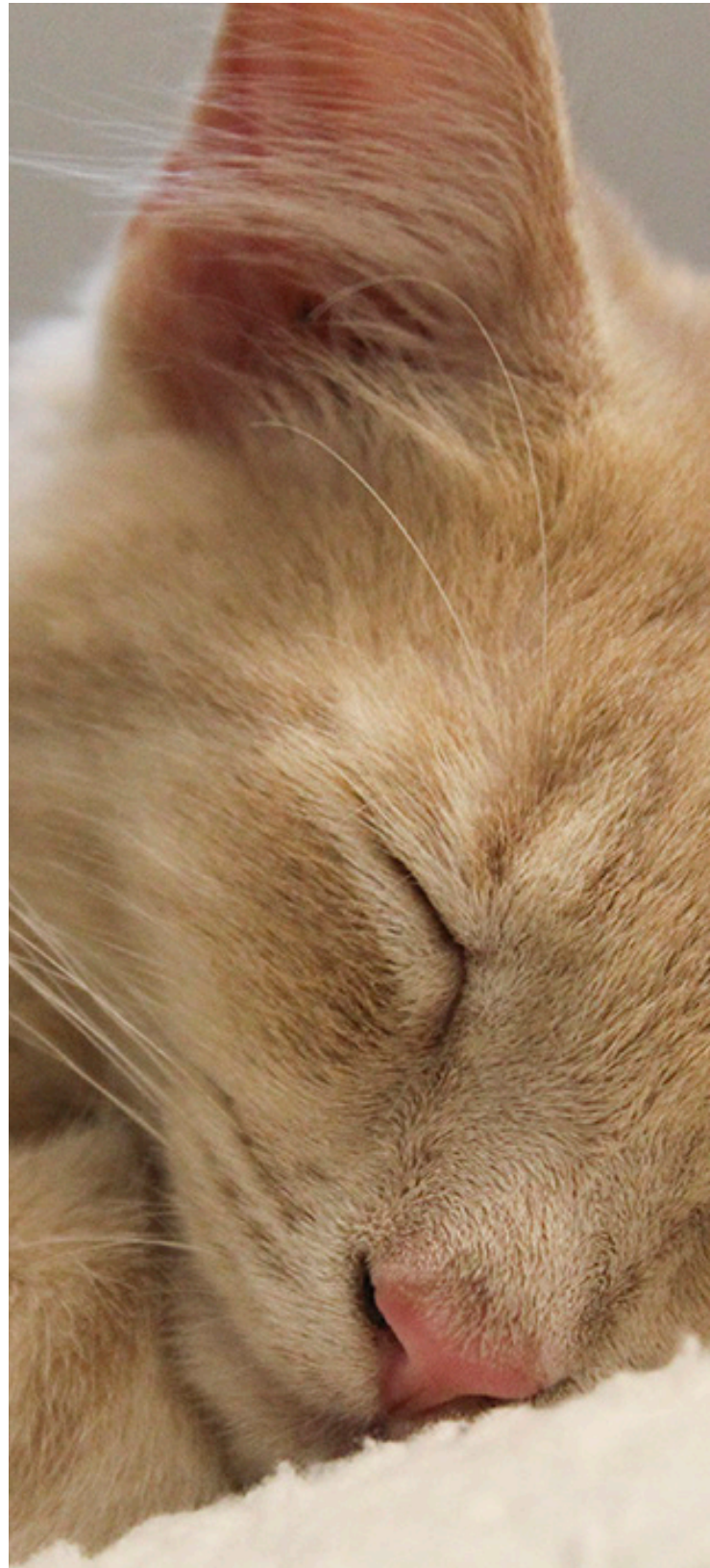
## PROCEDURE DETAILS

Please discuss the following points with your client before their arrival.

- The patient should be fasted to allow for optimal evaluation of the cranial abdomen
- The patient's abdomen will be shaved and a complete ultrasound performed
- Should the ultrasound exam results warrant urgent intervention, you should prepare the client for possible admission to the hospital via the Emergency Service at your discretion and in consultation with the client.
- Angell's internist will communicate findings to your office via fax. You can share the report with the client at that time.
- Clients are encouraged to direct follow-up questions to you, their primary care doctor of record. The internist does not typically speak to the client after the study.
- The client will be escorted to the front desk for payment. The fee is \$598.32 (at time of publication; prices are subject to increase). Payment via credit card or cash is expected at the time of service.

## TO MAKE AN APPOINTMENT

Please provide your client's contact information on the completed form, and we will contact your client to arrange an appointment time. If you prefer, you may make the appointment for your client by calling 781-902-8400. Clients may call or email us at [diagnosticimaging@angell.org](mailto:diagnosticimaging@angell.org).





---

# ANGELL REFERRING VETERINARIAN PORTAL

---

Secure, mobile-friendly, 24/7 access to online referral forms, your referred patients' medical records, images, lab results, discharge instructions, and more.  
[angell.org/vetportal](https://angell.org/vetportal)

## 24/7 ACCESS TO YOUR REFERRED PATIENTS' RECORDS

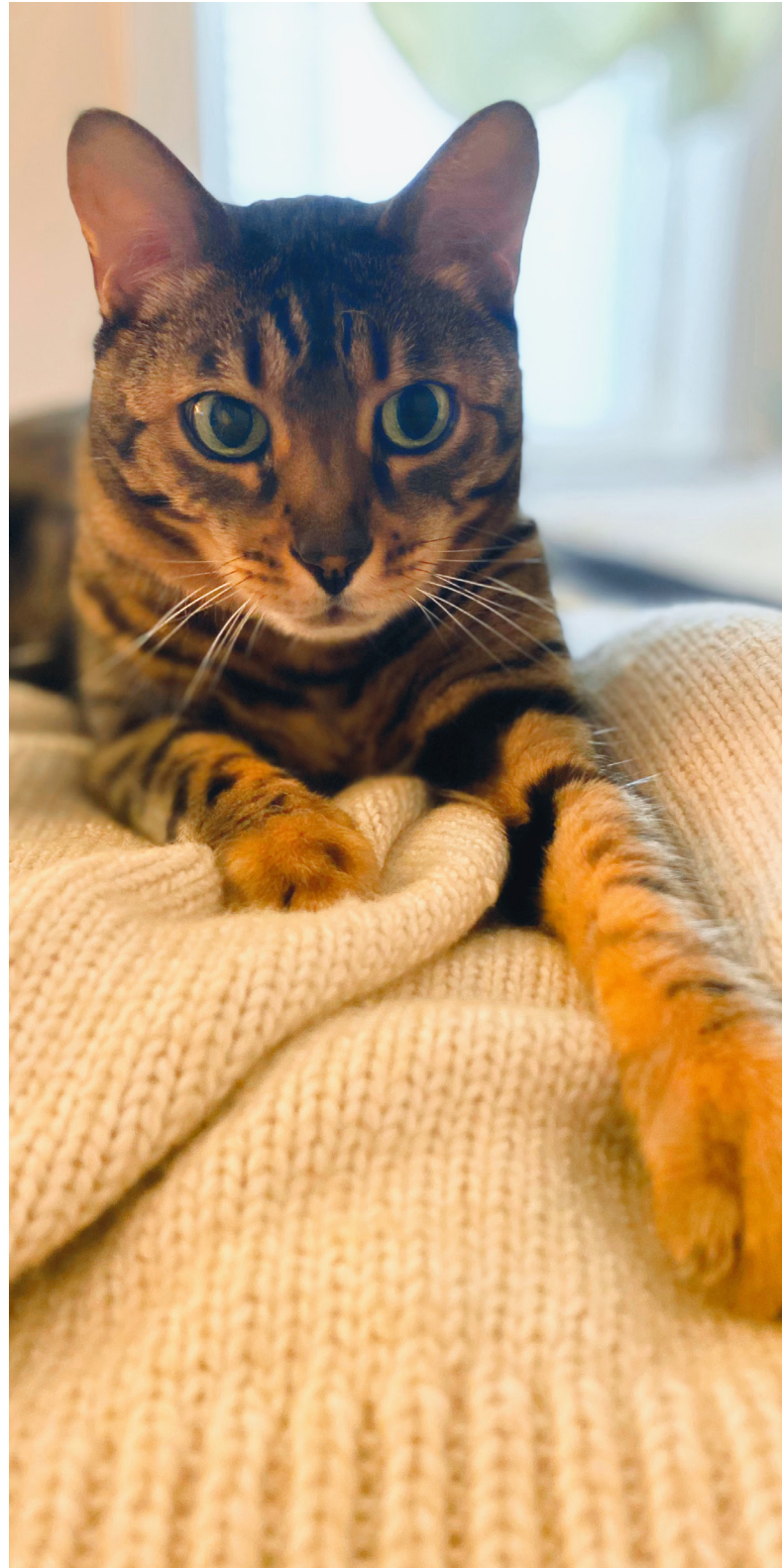
We are pleased to offer the Angell Referring Veterinarian Portal to our referring partners.

The Portal provides 24/7, secure, mobile-friendly access to your referred patients' records through [angell.org/vetportal](https://angell.org/vetportal). The system automatically updates throughout the day and provides 24/7 access to:

- Online Medical Records
- Check-in Status
- SOAPs
- Diagnostic Images
- Lab Results
- Referral Reports
- Discharge Instructions
- Prescriptions

Settings can be customized within the Portal to receive notices by email or fax, and you may list multiple emails to receive check-in, discharge, deceased, and update notices.

Visit [angell.org/vetportal](https://angell.org/vetportal) or call our Angell Referral Coordinator at 617-522-5011 to gain access to your account.





---

# CLINICAL ARTICLES

---

Angell has a robust library of clinical articles written by staff veterinarians. Please visit [angell.org/articles](https://angell.org/articles) to view the complete list. Scan the QR codes to read the sampling of articles below.



## ANESTHESIA

### [Use of Gabapentin in Veterinary Medicine](#)

Becca Reader, DVM, DACVAA



## EMERGENCY AND CRITICAL CARE

### [Emergency Handling of, Stabilization of, and Diagnosing the Dyspneic Patient](#)

Laura Badeski, VMD



## AVIAN AND EXOTICS

### [Recognizing Signs of Pain in Exotic Animal Species](#)

Anne Staudenmaier  
VMD, DABVP



## NEUROLOGY

### [Cannabidiol \(CBD\) in Canine Epilepsy](#)

Michele James  
DVM, DACVIM



## DENTISTRY

### [Cone Beam Computed Tomography \(CBCT\): Ancillary Diagnostic Imaging in Veterinary Dentistry Patients](#)

Jessica Riehl, DVM, DAVDC



## ONCOLOGY

### [Surgical Options for Oral Tumors](#)

Megan Cray  
VMD, DACVS-SA



## DIAGNOTIC IMAGING

### [Small Intestinal Disease on Ultrasound](#)

Ruth Van Hatten, DVM, DACVR



## SURGERY

### [A Step-by-Step Description of Feline Perineal Urethrostomy](#)

Jennifer Peterson-Levitt  
DVM, DACVS-SA

# MSPCA-Angell West

## Waltham, MA

293 Second Avenue, Waltham, MA | Phone: 781-902-8400 | Fax: 781-622-1410 | [angell.org/waltham](http://angell.org/waltham)

MSPCA-Angell West in Waltham offers 24/7 Emergency & Critical Care service along as well as specialized service appointments with board-certified doctors throughout the week. Urgent Care service for cats and dogs is available by appointment.

### ABOUT MSPCA-ANGELL WEST

Angell Animal Medical Center is pleased to offer the convenience of our MSPCA-Angell West facility in Waltham, MA. The Waltham facility schedules specialized service appointments Monday through Saturday as well as appointment-based Urgent Care service. If needed, an oxygen-equipped courtesy shuttle can transport animals to Boston for further specialized care and then take them back to Waltham. Whether in Boston or in Waltham, our specialists regularly collaborate and plan treatments tailored to your pet's emergency, surgical, and specialty needs. And even with all of our experience and advanced equipment, our specialty care is competitively priced. We offer a broad range of expertise and deliver this care with the one-on-one compassion that our clients and patients deserve.



### 24/7 EMERGENCY & CRITICAL CARE

Phone: 781-902-8400  
Fax: 781-622-1410

**Jordana Fetto, DVM**  
[jfetto@angell.org](mailto:jfetto@angell.org)

**Mina Gergis, DVM**  
[mgergis@angell.org](mailto:mgergis@angell.org)

**Ashley Lockwood, DVM, DACVECC-SA**  
[aunlockwood@angell.org](mailto:aunlockwood@angell.org)

**Amanda Lohin, DVM**  
[alohin@angell.org](mailto:alohin@angell.org)

**Aidan Masri, DVM**  
[amasri@angell.org](mailto:amasri@angell.org)

**Courtney Peck, DVM, DACVECC-SA**  
Chief Medical Officer, Waltham  
[cpeck@angell.org](mailto:cpeck@angell.org)

**Leena Seegars, DVM**  
[lseegars@angell.org](mailto:lseegars@angell.org)

**Jessica Seid, DVM**  
[jseid@angell.org](mailto:jseid@angell.org)

**Catherine Sumner, DVM, DACVECC-SA**  
Chief of Staff, Waltham  
[csumner@angell.org](mailto:csumner@angell.org)

### AVIAN & EXOTIC MEDICINE

Phone: 617-989-1561  
Fax: 617-989-1613

**Anne Staudenmaier, VMD, DABVP**  
(Avian Practice)  
[astaudenmaier@angell.org](mailto:astaudenmaier@angell.org)

### BEHAVIOR

Phone: 617-989-1520  
Fax: 617-989-1627

**Terri Bright, Ph.D., BCBA-D, CAAB**  
[tbright@angell.org](mailto:tbright@angell.org)

**Allyson Salzer, Ph.D., BCBA-D**  
[asalzer@angell.org](mailto:asalzer@angell.org)

### DERMATOLOGY

Phone: 617-524-5733  
Fax: 617-989-1613

**Meagan Painter, DVM, DACVD**  
[mpainter@angell.org](mailto:mpainter@angell.org)

### DIAGNOSTIC IMAGING

Phone: 781-902-8400  
Fax: 781-622-1410

### INTERNAL MEDICINE AND OUTPATIENT ULTRASOUND

Phone: 617-541-5186  
Fax: 617-989-1657

**Lisa Gorman DVM, DACVIM**  
[lgorman@angell.org](mailto:lgorman@angell.org)

**Daniela Vrabelova Ackley, DVM, DACVIM**  
[dvrabelova@angell.org](mailto:dvrabelova@angell.org)

### SURGERY

Phone: 617-541-5048 Fax: 617-989-1660

**Lori Agulian, DVM**  
[lagulian@angell.org](mailto:lagulian@angell.org)

**Jennifer Peterson-Levitt, DVM, DACVS-SA**  
[jpetersonlevitt@angell.org](mailto:jpetersonlevitt@angell.org)

### URGENT CARE

Phone: 781-902-8400

**Natasha Pakravan, DVM**  
[npakravan@angell.org](mailto:npakravan@angell.org)

**Julie Shields, DVM**  
[jshields@angell.org](mailto:jshields@angell.org)



# ANGELL AT ESSEX

## Danvers, MA

565 Maple Street, Danvers, MA | Phone: 978-304-4648 | [angell.org/essex](http://angell.org/essex)



**Heidi Broadley, DVM**  
[hbroadley@angell.org](mailto:hbroadley@angell.org)



**Sara Gardiner, DVM**  
[sgardiner@angell.org](mailto:sgardiner@angell.org)

Angell at Essex is a non-profit veterinary clinic located in Danvers, MA. The clinic is partnered with Essex North Shore Agricultural and Technical School (Essex Tech) to provide affordable veterinary care to the general public.

The clinic serves as a teaching hospital for students enrolled in the Veterinary Science program at Essex Tech. The program provides veterinary assistant training onsite, and students are overseen by MSPCA-Angell veterinarians.

### SERVICES OFFERED TO CLIENTS

- Primary veterinary care
- General dentistry and other basic surgeries
- Preventive dental care
- Spay/neuter services
- Vaccinations
- Non-emergency sickness exams (e.g., ear aches, urinary tract infections)
- Annual wellness exams
- Dermatology
- Preventative diagnostics
- Flea and tick and heartworm prevention
- Nutrition and weight management
- Microchipping
- End-of-life care

### UPDATE ON DISCOUNTED SERVICES

We depend on your referral support and the revenue from our clients and donors to fund the discounted veterinary services we provide to qualifying, low-income clients as part of our mission.

Angell at Essex has a dedicated number of appointment slots for discounted services. *Unfortunately, as of September 2023, our discounted appointments are at capacity, and we are unable to accept new clients at our Angell at Essex location for these discounted services.* We continue to welcome full-pay clients to Angell at Essex and hope to expand capacity once additional funding becomes available. We will provide updates at [angell.org/essex](http://angell.org/essex).

Angell at Essex offers the following discount for clients regardless of financial need:

- Essex North Shore Agricultural and Technical School employees receive a 20% discount on services

Angell at Essex is open weekdays from 7:45am to 4pm throughout the year. To schedule an appointment, please call 978-304-4648.

Please note that Angell at Essex does not provide overnight care, specialty service care, or 24/7 emergency services. Appropriate cases will be referred to Angell's Boston or Waltham facilities or a surrounding specialty veterinary referral hospital.





# MSPCA-Angell Clinics in Boston, Methuen, and Cape Cod

Offering subsidized veterinary care to help keep pets and families together

The vision of the MSPCA-Angell Clinics is simple yet powerful: provide affordable veterinary care that helps keep pets and families together. By providing subsidized, low-cost veterinary care, the clinics offer a new pathway for families in need.

The clinics provide spay/neuter services and acute, outpatient, surgical care. They are meant for families who cannot afford urgent medical care and are faced with a painful choice between euthanasia, surrender, or bringing an animal home against medical recommendations. We welcome your referral to our clinics.



## MEDICAL PROCEDURES PERFORMED AT THE MSPCA-ANGELL CLINICS

- Diagnostics: bloodwork, urinalysis, radiographs, histopathology
- Spay for pyometra or dystocia
- Wound and laceration care
- Amputation (tail, digit, limb)
- Splinting
- Umbilical hernia repair
- Cystotomy
- Mass removal when quality of life is impacted
- Nasopharyngeal/oral polyp removal
- Enucleation
- Foreign body surgery for stable pets who do not require 24-hour hospitalization

## CLIENTS MUST FINANCIALLY QUALIFY FOR TREATMENT

To receive care at MSPCA-Angell clinics, clients must be on one of the public assistance programs listed below or have an income under the Massachusetts poverty guidelines (<https://aspe.hhs.gov/poverty-guidelines>). The ultimate determination of suitability for this program will be made on a case-by-case basis at the discretion of the MSPCA-Angell managers and veterinarians.

- SNAP/EBT benefits
- WIC
- Residency in public housing
- SSI
- Fuel assistance
- TAFDC
- EAEDC
- VA assistance

For more information, please visit [angell.org/clinics](https://angell.org/clinics).

**mspca**  **angell clinic**

Boston | Cape Cod | Nevins Farm



# ANGELL SERVICES

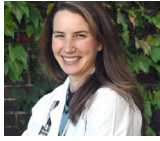




# 24/7 EMERGENCY & CRITICAL CARE

Emergency Veterinarian Referral Line: 617-522-5011

Boston Phone: 617-522-7282 | Boston Fax: 617-989-1633 | Waltham Phone: 781-902-8400 | Waltham Fax: 781-622-1410  
emergency@angell.org | angell.org/emergency



**Alison Allukian, DVM**  
aallukian@angell.org



**Laura Badeski, DVM**  
lbadeski@angell.org



**Kiko Bracker  
DVM, DACVECC-SA**  
Service Director  
kbracker@angell.org



**David Carabetta  
DVM, DACVECC-SA**  
dcarabetta@angell.org



**Callie Cazlan, DVM**  
ccazlan@angell.org



**Elton Chan, DVM**  
echan@angell.org



**Nicole D'Addezio, VMD**  
ndaddezio@angell.org



**Jordana Fetto, DVM**  
Waltham  
jfetto@angell.org



**Mina Gergis, DVM**  
Waltham  
mgergis@angell.org



**Hana Huff, DVM**  
hhuff@angell.org



**Audrey Koid  
DVM, DACVECC-SA**  
akoid@angell.org



**Ashley Lockwood, DVM, DACVECC-SA**  
Waltham  
alockwood@angell.org



**Amanda Lohin, DVM**  
Waltham  
alohin@angell.org



**Aiden Masri, DVM**  
Waltham  
amasri@angell.org



**Katherine McKean, DVM**  
kmckean@angell.org



**Courtney Peck, DVM, DACVECC-SA**  
Chief Medical Officer, Waltham  
cpeck@angell.org



**Lena Seegars, DVM**  
Waltham  
lseegars@angell.org



**Jessica Seid, DVM**  
Waltham  
jseid@angell.org



**Nathalie Suciu, DVM**  
nsuciu@angell.org



**Catherine Sumner, DVM, DACVECC-SA**  
Chief of Staff, Waltham  
csumner@angell.org



**Megan Whelan, DVM, DACVECC-SA, CVA**  
Chief Medical Officer / Service Director  
mwhelan@angell.org



# 24/7 EMERGENCY & CRITICAL CARE

## OVERVIEW

The highly-trained veterinarians comprising the Emergency and Critical Care Service — the 24/7 pulse of the Angell care network — treat pets suffering from life-threatening trauma and disease. Referring veterinarians may alert the staff to an incoming case via our referral phone line; the general public may use our walk-in emergency clinics any hour of the day, 365 days a year.

Angell's new Supportive Care Unit (SCU) and Intensive Care Unit (ICU) provide enhanced features and comforts such as species separation with noise control, natural lighting, bays for mechanical ventilation and dialysis and a built-in isolation ward. Additionally, the ICU is equipped with continuous cardiac telemetry, blood pressure, pulse oximetry, blood gas, and other monitoring devices. Specially constructed oxygen cages provide an oxygen-enriched temperature and humidity-controlled environment for our most critical patients. Advanced techniques, such as blood component therapy, peritoneal dialysis, and ventilator therapy, are also available.

## EMERGENCY & CRITICAL CARE SERVICES

- Board-certified criticalists in Boston and Waltham
- Dedicated nursing staff in emergency receiving and intensive care. The nursing staff is trained in monitoring critically ill patients on mechanical ventilators, those requiring continuous drug infusions, and a host of other technical procedures.
- On-site blood bank with a dedicated technical staff, emphasizing blood component therapy. Whether dealing with emergency transfusion needs from trauma or immune disease, or managing the chronically ill with repeated transfusions, blood products are available at all times.
- Multiple means of oxygen administration, including high-flow oxygen therapy and mechanical ventilation with a state-of-the-art ventilator. The staff veterinarians, residents, and critical care nurses take a team approach to managing these cases and other critically ill patients.
- Point-of-care 24-hour monitoring capabilities include direct and indirect arterial blood pressure, coagulation parameters, blood chemistries and blood gases, lactate, and co-oximetry.
- Co-oximetry allows the staff to measure blood for methemoglobin and carboxyhemoglobin levels when suspected of acetaminophen or carbon monoxide poisoning. The staff can also monitor blood osmolality and colloid oncotic pressure. This enables the staff to further fine-tune fluid therapies and medication administration to individual patient needs.
- Consultations are available with specialists throughout the hospital. Daily cage-side rounds provide an environment for repeated case re-evaluation and allow the team to adjust treatment promptly.
- A critical care team is in the ICU every day, backing up the veterinarians, receiving emergencies, and helping to assess and monitor the patients. The team comprises senior staff, residents, associate veterinarians, and nurses. The staff provides peritoneal dialysis; management of open abdomen; mechanical ventilation; and management of severe pancreatitis, diabetic ketoacidosis, sepsis, and poly-trauma, among other critical conditions. Enteral and parenteral nutrition techniques are a routine part of the practice.



---

# ANESTHESIOLOGY

---

Phone: 617-541-5048 | Fax: 617-989-1660 | [anesthesia@angell.org](mailto:anesthesia@angell.org) | [angell.org/anesthesia](http://angell.org/anesthesia)



**Becca Reader, DVM, DACVAA**  
[breader@angell.org](mailto:breader@angell.org)



## OVERVIEW

Angell's first priority is the care and safety of our patients. Our anesthesiologist works with Angell's specialists to ensure that the safest and most effective anesthesia protocols are administered. In addition, our experienced, certified/licensed veterinary technicians monitor each patient during anesthesia using cutting-edge equipment to measure blood pressure, carbon dioxide, oxygen, and heart rate. Cases can range from providing routine sedation for radiographs to performing general anesthesia on patients undergoing brain or open-heart surgery.

Angell's Anesthesia Service focuses on making anesthesia and sedation safe and comfortable. This includes peripheral and regional nerve blockade, anesthetic management of polytrauma and critical care cases, and acupuncture and multimodal approaches to pain management.

## ANESTHESIA SERVICES

### Case Consultation and Continuing Education

The Anesthesiology Service provides individualized and optimal analgesia to patients during and after procedures. Dr. Becca Reader is available for case planning and consultation to provide safe and effective anesthesia for all patients. Clients and referring veterinarians can ask for specialized services for difficult or concerning problems related to anesthesia and pain management. Continuing education is available on multiple topics related to pain management and anesthesia.

### Locoregional Anesthesia

- Epidural anesthesia/analgesia
- Spinal analgesia/anesthesia
- Specific nerve blocks (nerve stimulation and ultrasound-guided localization)
- Specific regional blocks
- Intra-articular analgesia
- Local catheter infusions

### Multimodal Anesthesia

- Total or partial intravenous anesthesia protocols
- Continuous-rate analgesic infusions

### Special Species Anesthesia

- Consults or direct management
- Avian, reptile, and small mammal anesthesia
- Sedative and analgesic protocols

### Specialized Airway/Ventilation Management

- Difficult intubation solutions
- Tracheostomy and pharyngostomy tube
- Positive end-expiratory pressure
- Pressure and volume control and support ventilation

---

# AVIAN & EXOTIC MEDICINE

---

Phone: 617-989-1561 | Fax: 617-989-1668 | [avianexotic@angell.org](mailto:avianexotic@angell.org) | [angell.org/avianandexotic](http://angell.org/avianandexotic)



**Brendan Noonan, DVM, DABVP  
(Avian Practice)**  
[bnoonan@angell.org](mailto:bnoonan@angell.org)



**Patrick Sullivan, DVM, DABVP  
(Avian Practice)**  
[psullivan@angell.org](mailto:psullivan@angell.org)



**Anne Staudenmaier, VMD, DABVP  
(Avian Practice)**  
Waltham  
[astaudenmaier@angell.org](mailto:astaudenmaier@angell.org)

## OVERVIEW

Drs. Noonan, Staudenmaier, and Sullivan are board-certified avian specialists. They also have completed specialty training in exotic medicine, including rabbit and rodent dentistry, medical and surgical treatment of ferret diseases, and reptile medicine and surgery. They provide wellness care and emergency and critical care for avian and exotic pets.

Optimal wellness care and emergency and critical care for avian, fish, small mammal, reptile, or other exotic pets require experienced veterinary management, specialized diagnostic and treatment protocols, and state-of-the-art equipment and facilities designed for these special species. Angell provides this environment as well as the compassion these animals deserve.

Our doctors are available by appointment for primary care and consultation or referral of avian and exotic cases.

## AVIAN & EXOTIC SERVICES

- Emergency and critical care for avian and exotic pets available 24 hours, seven days a week through our Emergency and Critical Care Service
- Wellness appointments available seven days a week
- Board-certified veterinarians with years of experience treating numerous exotic species, including birds, rabbits, ferrets, guinea pigs, small rodents, special small mammals (such as chinchillas or hedgehogs), reptiles, and amphibians
- Specifically designed general and isolation wards for the care of avian and exotic patients, including avian incubators and specialty reptile hospital caging
- Veterinary care for individual fish or aquarium collections. Services include water quality evaluation and recommendations, physical examination, fin and gill biopsies, fecal examinations, radiographs, anesthesia and surgery, humane euthanasia, and necropsy
- Specialists in surgery, radiology, dentistry, internal medicine, and ophthalmology assist in providing in-depth case management for special species
- Services include endoscopy, radiology, clinical pathology, ultrasonography, avian and exotic animal surgery, and advanced diagnostics, including infectious disease testing



---

# BEHAVIOR

---

Phone: 617-989-1520 | Fax: 617-989-1627 | [behavior@angell.org](mailto:behavior@angell.org) | [angell.org/behavior](http://angell.org/behavior)



**Terri Bright**  
**Ph.D., BCBA-D, CAAB**

Boston & Waltham  
[tbright@angell.org](mailto:tbright@angell.org)



**Allyson Salzer**  
**Ph.D., BCBA-D**

Waltham  
[asalzer@angell.org](mailto:asalzer@angell.org)



**Jocelyn Strassel, CVT, MS**

Boston & Waltham  
[jstrassel@angell.org](mailto:jstrassel@angell.org)

## OVERVIEW

Terri Bright, Ph.D., BCBA-D, CAAB, Allyson Salzer, Ph.D., BCBA-D, and Jocelyn Strassel, CVT, MS, offer behavior consultations for cats and dogs, available either in person or via video conference. Patients are seen at Angell in Boston and Waltham.

## BEHAVIOR SERVICES

### Client Plan Development

Following consultation, clients receive a detailed plan for their pet to modify behavior, and each consultation includes four months of email and phone follow-up to see how their pet is doing following the consultation.

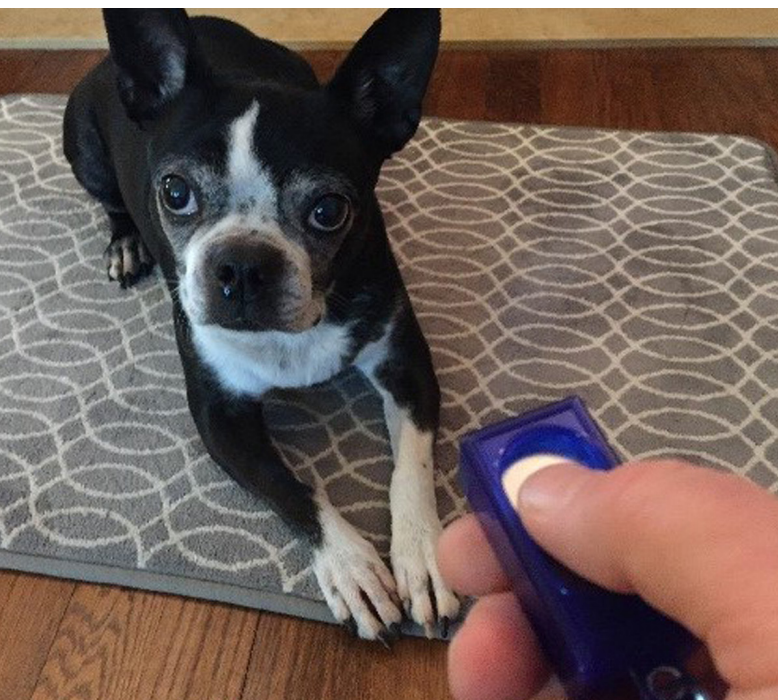
We offer positive-based behavior modification treatment plans for issues such as:

- Aggression towards people and/or other animals
- Separation anxiety
- Noise phobias
- House soiling and marking
- Generalized anxiety
- Situational anxiety (car rides, slippery floors, vet visits)
- New baby acclimation
- Furniture scratching
- Excessive vocalization
- Cognitive dysfunction
- Compulsive behavior

### Behavior appointments are available Monday through Friday.

- Dr. Terri Bright: Wednesdays, Thursdays, and Fridays (Boston and Waltham)
- Dr. Allyson Salzer: Mondays (Waltham)
- Jocelyn Strassel: Mondays and Thursdays (Boston and Waltham)

For more information on dog training, please visit [angell.org/dog-training](http://angell.org/dog-training).



---

# CARDIOLOGY

---

Phone: 617-541-5038 | Fax: 617-989-1653 | [cardiology@angell.org](mailto:cardiology@angell.org) | [angell.org/cardiology](http://angell.org/cardiology)



**Katie Hogan, DVM, DACVIM  
(Cardiology)**

[khogan@angell.org](mailto:khogan@angell.org)



**Terry Huh, DVM, DACVIM  
(Cardiology)**

[thuh@angell.org](mailto:thuh@angell.org)

## OVERVIEW

Angell is home to one of New England's most experienced veterinary cardiology practices. The team includes two full time board-certified cardiologists and two cardiology residents. Our team size and collective expertise allow us to provide extensive outpatient hours, as well as collaboration and sub-specialization for excellence in all areas of cardiovascular medicine and interventional cardiology within the veterinary field.

Angell's cardiology staff focuses on clinical excellence, optimal client service, and animal care. We provide on-site availability of cardiologists six days per week, with consultation and emergency services through our Emergency Critical Care Service on Sundays, holidays, and overnight. The staff size allows us to accommodate last-minute emergency referrals (by prior arrangement).

Our cardiology training program emphasizes resident education (clinical and didactic). It provides intense continuing education opportunities for the staff cardiologists, allowing us to keep current on the latest techniques and clinical findings.

## CARDIOLOGY SERVICES

### Outpatient and Inpatient Echocardiography

- Three echocardiography machines (GE Vivid E9 Color Flow Doppler and GE Vivid I Portable Echocardiogram with transesophageal capability)
- Owners may remain with their pet during routine outpatient cardiology visits (including the echocardiogram)

### Outpatient and Inpatient Electrocardiography

- HP Pagewriter 300 machine
- Dextronix digital ECG system

### Outpatient and Inpatient Blood Pressure Determination

- Parks Doppler, Dynamap, and Passport
- Pet MAP

### Outpatient Ambulatory ECG Diagnostic Services

- 24-hour Holter monitor evaluation (for animals with diagnosed or suspected paroxysmal arrhythmia)
- Event monitoring (for recurrent syncope activity)
- Inpatient continuous telemetric ECG recording

### Full-Service Cardiac Catheterization Laboratory

- Balloon dilatation for pulmonic stenosis, aortic stenosis
- Amplatzer canine ductal occluder (ACDO) placement
- Coil embolization for patent ductus arteriosus
- Diagnostic cardiac catheterization and angiography

### Full-Service Pacemaker Program

- Transvenous pacemaker implantation (temporary, permanent)
- Surgically placed epicardial pacemaker implantation

### Cardiac Surgery Program

*(In Conjunction with the Angell Surgery Department)*

- Pericardiectomy
- Surgical PDA ligation
- Valvotomy for pulmonic stenosis
- Epicardial pacemaker implantation

### Minimally Invasive Thoracic Surgery Program—Thoracoscopy

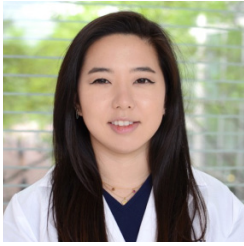
- Pericardial window for recurrent pericardial effusion
- Exploratory thoracoscopy for idiopathic pleural effusion

---

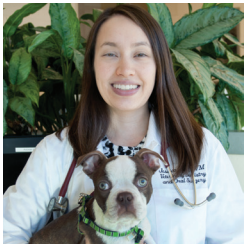
# DENTISTRY

---

Phone: 617-522-7282 | Fax: 617-522-4885 | [dentistry@angell.org](mailto:dentistry@angell.org) | [angell.org/dentistry](http://angell.org/dentistry)



**Shawna Han, DVM**  
[shan@angell.org](mailto:shan@angell.org)



**Jessica Riehl, DVM, DAVDC**  
[jriehl@angell.org](mailto:jriehl@angell.org)



**Joyce Tai, DVM, DAVDC**  
[jtai@angell.org](mailto:jtai@angell.org)

## OVERVIEW

The Dentistry Service at Angell has been proud to provide quality oral health care to pets and education to clients and veterinarians since 1998.

We are a dentistry-dedicated technical staff with experience treating high-anesthesia-risk patients.

Coordination and consultation with Angell's specialty services help provide optimal patient care. Some of the specialty services we work with include Cardiology, Emergency and Critical Care, Internal Medicine, Oncology, and Surgery.

## DENTISTRY SERVICES

### Periodontal Treatment

- Dental examination
- Dental radiography
- Dental scaling and polishing
- Advanced periodontal pocket therapy
- Surgical tooth extraction

### Fractured Teeth

- Dental radiography
- Endodontics
- Root canal treatments with Lightspeed

### Endodontic System

- Vital pulpotomy
- Surgical tooth extraction

### Malocclusion

- Deciduous/permanent tooth extractions
- Orthodontic treatment

### Oral Neoplasia

- Dental radiography
- Biopsy/histology
- Maxillectomy/mandibulectomy
- Coordination with Oncology Department for adjunctive therapy

### Jaw Fractures

- Dental radiography
- Intraoral fixation
- Fracture fixation





---

# DERMATOLOGY

---

Phone: 617-524-5733 | Fax: 617-989-1613 | [dermatology@angell.org](mailto:dermatology@angell.org) | [angell.org/dermatology](http://angell.org/dermatology)



**Klaus Loft, DVM**  
[kloft@angell.org](mailto:kloft@angell.org)



**Meagan Painter, DVM, DACVD**  
Waltham  
[mpainter@angell.org](mailto:mpainter@angell.org)



**Brooke Simon, DVM**  
[bsimon@angell.org](mailto:bsimon@angell.org)



## OVERVIEW

The Angell Dermatology Service offers a comprehensive approach to veterinary dermatology in a multispecialty hospital environment. This enables us to work closely with internal medicine, surgery, radiology, oncology, and pathology to diagnose and manage various dermatologic and otic conditions.

The Dermatology team sees patients by appointment only and offers extended appointment hours. Referring veterinarians, please fax a referral form and medical record to our dermatology communications coordinator before the appointment.

## DERMATOLOGY SERVICES

### Allergy Diagnosis and Management

- Intradermal and serologic allergy testing
- On-site, custom immunotherapy formulation
- Diet recommendations for food allergies

### Ear Clinic for the Diagnosis and Management of Chronic Ear Disease

- Identification and management of underlying skin or systemic disorders affecting ear health
- Ear cytology
- Video otoscopic examination
- Bulla CT with interpretation by the Angell Diagnostic Imaging Service
- On-site aerobic and anaerobic bacterial ear culture
- General anesthesia for deep ear cleanings
- Ear biopsies and myringotomies
- Otic surgical consultations and procedures with the Angell Surgery Service

### General Dermatology

- Cytologies, skin scrapes, trichograms
- On-site bacterial cultures
- On-site fungal cultures
- Skin biopsies

### Dermatopathology

- Histopathologic evaluations of skin biopsies with the Angell Pathology Service

# DIAGNOSTIC IMAGING

Phone: 617-541-5139 | Fax: 617-989-1617 | [diagnosticimaging@angell.org](mailto:diagnosticimaging@angell.org) | [angell.org/diagnosticimaging](http://angell.org/diagnosticimaging)



**Naomi Ford, DVM, DACVR**  
[nford@angell.org](mailto:nford@angell.org)



**Steven Tsai, DVM, DACVR**  
[stsai@angell.org](mailto:stsai@angell.org)



**Ruth Van Hatten, DVM, DACVR**  
[rvanhatten@angell.org](mailto:rvanhatten@angell.org)

## OVERVIEW

The Diagnostic Imaging Service at Angell Animal Medical Center supports the specialty services of the hospital by providing comprehensive in-house diagnostic expertise and technology for both our Boston and Waltham locations.

## SERVICES

- Access to a full range of imaging technologies to evaluate the many and varied clinical problems that animals present
- In-house services include:
  - Radiology
  - Ultrasonography
  - Fluoroscopy
  - Multi-detector Computed Tomography (16-slice CT)
  - Magnetic Resonance Imaging (1.5 Tesla MRI)
  - Nuclear Scintigraphy
  - I-131 Treatment for Feline Hyperthyroidism
- 1.5 MRI has improved our ability to image neurologic patients, orthopedic disease, as well as abdominal and vascular abnormalities
- The 80-slice CT is capable of image reconstruction in multiple planes, including 3-D reconstructions, for optimal surgical planning. Given the rapid acquisition time, many orthopedic patients, if they are good anesthetic candidates, can be scanned under heavy sedation alone. The CT can also perform computed tomographic angiography (CTA), thoracic CT, and abdominal CT
- Fine-needle aspirates and biopsies are performed under ultrasonographic, fluoroscopic, and CT guidance
- Nuclear medicine procedures available include bone scans, real-time GFR analysis for evaluation of renal function prior to nephrectomy, and transplenic portosystemic shunt studies
- Reading and reporting on referral radiographs, MRI, and CT studies
- OFA hip and elbow exams



---

# INTERNAL MEDICINE

---

Phone: 617-541-5186 | Fax: 617-989-1657 | [internalmedicine@angell.org](mailto:internalmedicine@angell.org) | [angell.org/internalmedicine](http://angell.org/internalmedicine)



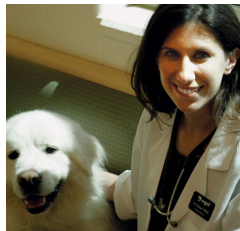
**Douglas Brum, DVM**  
[dbrum@angell.org](mailto:dbrum@angell.org)



**Evan Mariotti**  
**DVM, DACVIM-SA**  
[emariotti@angell.org](mailto:emariotti@angell.org)



**Maureen Carroll**  
**DVM, DACVIM-SA**  
[mccarroll@angell.org](mailto:mccarroll@angell.org)



**Susan O'Bell**  
**DVM, DACVIM-SA**  
Service Director  
[sobell@angell.org](mailto:sobell@angell.org)



**Zachary Crouse**  
**DVM, DACVIM-SA**  
[zcrouse@angell.org](mailto:zcrouse@angell.org)



**Annie Sheu-Lee, DVM**  
[asheulee@angell.org](mailto:asheulee@angell.org)



**Lisa Gorman**  
**DVM, DACVIM-SA**  
Waltham  
[lgorman@angell.org](mailto:lgorman@angell.org)



**Daniela Vrabelova Ackley**  
**DVM, DACVIM-SA**  
Waltham  
[dvrabelova@angell.org](mailto:dvrabelova@angell.org)



**Shawn Kearns**  
**DVM, DACVIM-SA**  
[skearns@angell.org](mailto:skearns@angell.org)



---

# INTERNAL MEDICINE

---



## OVERVIEW

The Internal Medicine Service at Angell Animal Medical Center offers specialized care and outpatient services for cats and dogs.

The Internal Medicine team has decades of clinical experience and offers state-of-the-art diagnostics and therapeutic treatment options. The service provides expertise in many medical disciplines, including endocrinology, nephrology, hepatology, gastroenterology, immune disorders, hematology, and infectious diseases.

## INTERNAL MEDICINE SERVICES

- Appointments seven days a week in Boston
- 24-hour continuous monitoring for hospitalized patients
- Abdominal ultrasound available in Waltham and Boston
- Complete capabilities for endoscopic diagnosis of gastrointestinal, respiratory, and urogenital disease. Multiple endoscopic services are available, including upper and lower gastrointestinal endoscopy (for diagnostic biopsies and foreign body retrieval), cystoscopy, rhinoscopy, and bronchoscopy.
- Advanced diagnostic imaging, including on-site CT and MRI. Angell's MRI unit delivers high-quality images, allowing our doctors to detect smaller and more subtle lesions to enable intervention at earlier stages in the disease process.
- Close collaboration with clinical pathology and radiology to obtain cytologic diagnoses through the least-invasive means possible
- Full services available for transfusions of packed red blood cells, fresh frozen plasma, cryoprecipitate, and platelet-rich plasma
- Fecal transplants
- Laparoscopic liver biopsies for dogs and cats
- Tracheal and urethral stenting
- Laboratory and pathologic analyses of body fluids and tissues. Angell offers an advanced, full-service, on-site laboratory with clinical pathology and histopathology services. The Pathology Service is led by one double-board-certified clinical and anatomic pathologist and a board-certified anatomic pathologist.
- Feeding tube placement in compromised patients (PEG, esophagostomy, NE tube)
- Bone marrow aspirates and core biopsies for evaluation of hematologic disorders and cancer staging
- I-131 treatment for hyperthyroid cats (generally released three days post-treatment)
- An integrated approach to medicine with the full support of Critical Care, Cardiology, Ophthalmology, Neurology, Oncology, Radiology, and Surgery Services

# I-131 TREATMENT PROGRAM

617-541-5186 | [angell.org/i131](http://angell.org/i131) | [internalmedicine@angell.org](mailto:internalmedicine@angell.org) | [angell.org/internalmedicine](http://angell.org/internalmedicine)

## WHAT IS FELINE HYPERTHYROIDISM?

Feline hyperthyroidism is caused by spontaneous thyroid masses, most of which are benign (adenoma) and some of which are malignant (carcinoma). Fortunately, both conditions can be treated by radioiodine (I-131); however, the doses and results may differ depending on the animal's condition. The goal in treating the disease is to attain normal thyroid hormone levels, which lead to a normal, healthy weight. The overall success rate of this treatment is between 85 and 90 percent.

## WHAT ARE SOME SYMPTOMS OF FELINE HYPERTHYROIDISM?

- Significant weight loss
- Loss of the normal hair coat
- Increased appetite
- Irritability and/or restlessness



## HOW DOES I-131 WORK?

This treatment is radioactive, so once injected into the body, it is absorbed by the thyroid gland. Once the abnormal thyroid tissue is destroyed by the radioiodine, the remaining tissue will perform normally.

## WILL THE RADIATION HURT THE NORMAL THYROID TISSUE?

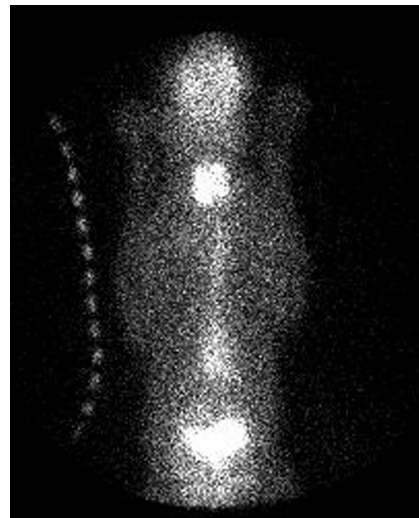
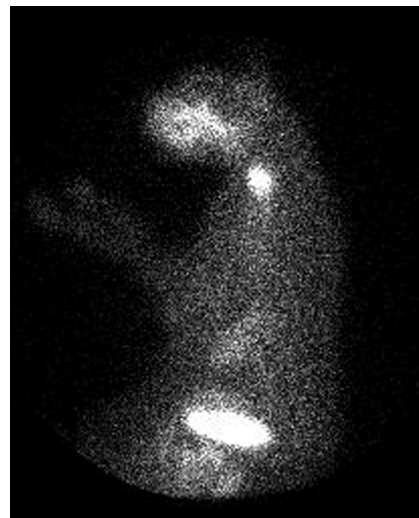
The normal tissue is relatively protected from the radiation because most of the hyperfunctional (abnormal) tissue takes in the radioiodine.

## HOW LONG WILL THE TREATMENT AND RECOVERY TAKE?

Hospitalization varies from six days to about two weeks. Initially, the thyroid must be scanned to determine the necessity and proper dosage of I-131. Following the scan, there is only a single injection; however, once injected, the cat cannot be released any earlier than three days after treatment under any circumstances due to radiation safety concerns.

## WHAT MAKES ANGELL'S I-131 PROGRAM UNIQUE?

- We are the only thyroid treatment program that scans cats first. Some hyperthyroid cats do not need to be treated because they do not have thyroid tumors, despite an elevated T4 level. The scan identifies these cats and negates the need for treatment with I-131.
- Our program has a doctor on the premises 24 hours a day
- We are the only facility that treats cats with major medical issues that could complicate I-131 treatment of hyperthyroidism
- Our license permits release after three days, but we also provide boarding for clients who do not want the responsibility of the radiation issues and handling concerns at home





---

# NEUROLOGY

---

Phone: 617-541-5140 | Fax: 617-989-1666 | [neurology@angell.org](mailto:neurology@angell.org) | [angell.org/neurology](http://angell.org/neurology)



**Rob Daniel, DVM, DACVIM  
(Neurology)**  
[rdaniel@angell.org](mailto:rdaniel@angell.org)



**Michele James, DVM, DACVIM  
(Neurology)**  
Service Director  
[mjames@angell.org](mailto:mjames@angell.org)



**Jennifer Michaels, DVM, DACVIM  
(Neurology)**  
[jmichaels@angell.org](mailto:jmichaels@angell.org)

## OVERVIEW

Angell offers diagnostic evaluation and treatment in the specialty of small animal neurology.

Our neurologists provide optimal care in diagnosing and treating small animal neurological diseases, both medical and surgical, with state-of-the-art equipment and facilities.

Our services include diagnosis and treatment of seizure disorders, disc disease, granulomatous meningoencephalomyelitis (GME), infectious diseases of the nervous system, brain tumors, vertebral malformations/instability (Wobblers Syndrome), and numerous types of central and peripheral nervous system diseases.

## NEUROLOGY SERVICES

Appointments Tuesday to Sunday

- Neurologists available six days per week for consultations for patients who are admitted to the hospital as emergencies
- Diagnostic equipment includes radiography, ultrasonography, CSF analysis, electrodiagnostic capabilities, fluoroscopy, and myelography, all available Monday through Saturday
- MRI and CT units are available seven days a week
- Neurosurgical procedures include laminectomies, craniotomies, and cervical vertebral stabilization with methyl methacrylate and locking plate implants
- The facility includes veterinarians board-certified in emergency and critical care, diagnostic imaging, cardiology, oncology, ophthalmology, internal medicine, and surgery for readily available consultation dictated by the case
- 24-hour Critical Care Unit includes a dedicated and experienced team of specialty technicians, as well as regular ward care
- Laboratory and pathologic analyses of body fluids and tissues. Angell offers an advanced, full-service, on-site laboratory with clinical pathology and histopathology services. The Pathology Service is led by one double-board-certified clinical and anatomic pathologist and a board-certified anatomic pathologist





---

# ONCOLOGY

---

Phone: 617-541-5136 | Fax: 617-989-1668 | [oncology@angell.org](mailto:oncology@angell.org) | [angell.org/oncology](http://angell.org/oncology)



**Kristine Burgess**  
**DVM, MS, DACVIM**  
**(Medical Oncology)**  
[kburgess@angell.org](mailto:kburgess@angell.org)



**Megan Cray**  
**VMD, DACVS-SA**  
**(Surgical Oncology)**  
[mcray@angell.org](mailto:mcray@angell.org)



**Kendra Lyons, DVM**  
**(Practice Limited to**  
**Medical Oncology)**  
[klyons@angell.org](mailto:klyons@angell.org)



**Jillian Walz**  
**DVM, DACVIM, DACVR**  
**(Medical Oncology)**  
**(Radiation Oncology)**  
[jwalz@angell.org](mailto:jwalz@angell.org)

## OVERVIEW

Angell offers an advanced, multi-disciplinary approach to cancer diagnosis and treatment. We are committed to improving the quality of life in an atmosphere of caring and compassion.

Optimal management of cancer improves the quality of life and, in many cases, improves clinical outcomes for veterinary patients. Accurate and timely diagnosis, staging, and thoughtful treatment protocols are required to achieve these goals.

Our team has cancer diagnostics, chemotherapy, radiation therapy, biological therapies, and immunotherapy expertise.

Our specialists are active members of the Veterinary Cancer Society and Veterinary Oncology Cooperative Group. We participate in multi-institutional veterinary clinical trials and collaborate with medical professionals in the human arena, offering the ability to provide cutting-edge treatments to patients.



---

# ONCOLOGY

---



## ONCOLOGY SERVICES

- Oncology-dedicated technicians and one radiation therapist to support our oncologists
- Routine use of vascular access ports (VAP) for radiation patients, which eliminates the need for catheters and dramatically increases patient comfort
- Board-certified surgeons available for timely surgical intervention, including major tumor resections involving reconstructive surgery
- Critical care team with board-certified criticalists. 24-hour service offered for oncologic emergencies, including state-of-the-art pain management.
- Laboratory and pathologic analyses of body fluids and tissues. Angell offers an advanced, full-service, on-site laboratory with clinical pathology and histopathology services. The Pathology Service is led by one double-board-certified clinical and anatomic pathologist and a board-certified anatomic pathologist
- Cutting-edge diagnostic imaging facilities, including helical computed tomography, MRI, ultrasound, and fluoroscopy
- Sophisticated equipment for optimal radiation delivery, including a 6MV linear accelerator with electron capability and a computerized treatment planning system. Our Varian 2100 C/D linear accelerator is equipped with a 120-leaf, multi-leaf collimator, allowing us to block critical structures near the tumor bed. This is particularly important, for example, to spare the eye and brain when treating nasal or skull tumors, the heart when treating tumors located within the thorax or abdomen, and the spinal cord when treating tumors close to it.
- Intensity-modulated radiation therapy (IMRT), a technique used by Angell to minimize side effects of radiation treatment by sculpting the beam to the exact size and dimensions of the tumor
- Volumetric modulated Arc Therapy (VMAT) or RapidArc® Radiotherapy Technology, an innovative form of IMRT that delivers precise continuous radiation in a single treatment. While conventional IMRT treats the tumor over five to 10 minutes, VMAT can deliver the dose to the entire tumor in a 360-degree rotation in under two minutes.
- Convenient outpatient radiation therapy and chemotherapy services
- A multidisciplinary team approach to provide the best medical care, including involvement of the referring veterinarian and pet owner
- Close access to a large team of specialists in radiology, internal medicine, cardiology, neurology, ophthalmology, nutrition, and dentistry to allow timely cancer patient case management
- Stereotactic radiation treatment that reduces the number of radiation treatments required



---

# OPHTHALMOLOGY

---

Phone: 617-541-5095 | Fax: 617-989-1647 | [ophthalmology@angell.org](mailto:ophthalmology@angell.org) | [angell.org/eyes](http://angell.org/eyes)



**Daniel J. Biros, DVM, DACVO**  
[dbiros@angell.org](mailto:dbiros@angell.org)



**Martin E. Coster  
DVM, MS, DACVO**  
[mcoster@angell.org](mailto:mcoster@angell.org)



## OVERVIEW

The Ophthalmology Service at Angell Animal Medical Center provides extensive diagnosis and treatment of inherited, acquired, or traumatic conditions involving the eyelids, cornea, iris, lens, retina, optic nerve, and orbit.

Examinations are provided on a wide variety of species using direct and indirect ophthalmoscopy, slit-lamp biomicroscopy, Schirmer tear testing, topical fluorescein staining, tonometry, gonioscopy, ocular ultrasonography, CT, MRI, and electroretinography (to detect retinal degeneration).

Cataract removal with lens implantation is available, as well as laser and cryotherapy to treat glaucoma, iris tumors, and retinal detachment.

## OPHTHALMOLOGY SERVICES

- Diagnostic, therapeutic, and surgical services using advanced techniques, state-of-the-art equipment, up-to-date knowledge, and years of experience
- Examinations include slit-lamp biomicroscopy, indirect ophthalmoscopy, and standard in-office diagnostic tests, including tonometry
- Emergency and critical care services available 24 hours, seven days a week
- Evening and early morning appointments available
- Urgent care appointments available, often the same day
- Specialty services include cataract surgery with intraocular lens implantation; ocular ultrasound; electroretinography; cryosurgery; glaucoma surgery, including laser cyclophotocoagulation; corneal surgery, including grafting; and eyelid surgery. CERF examinations are available for breeding dogs.
- Specialists in internal medicine, radiology, cardiology, dermatology, and surgery assist in providing in-depth case management
- 24-hour critical care unit for patients needing intensive ocular therapy
- In-house MRI



---

# PATHOLOGY

---

Phone: 617-541-5014 | Fax: 617-522-7356 | [pathology@angell.org](mailto:pathology@angell.org) | [angell.org/pathology](http://angell.org/pathology)



**Patty Ewing, DVM, MS, DACVP**  
(Clinical and Anatomic Pathology)  
Service Director  
[pewing@angell.org](mailto:pewing@angell.org)



**Pamela Mouser, DVM, MS, DACVP**  
(Anatomic Pathology)  
[pmouser@angell.org](mailto:pmouser@angell.org)

## OVERVIEW

The mission of the Pathology Service at Angell Animal Medical Center is to provide quality diagnostic services, promote education and professional development, and support the mission of the MSPCA-Angell. Our laboratory accepts mail-in submissions for cytology, histopathology, and clinical pathology testing; courier pickup of samples is available in some areas of eastern Massachusetts. Angell's Pathology Service serves both our Boston and Waltham facilities.

The Angell Pathology staff includes two board-certified veterinary pathologists (anatomic and clinical pathology), a department manager, two supervisors, a lead technologist, two senior technicians, three clinical laboratory technicians, three histologists, and three pathology assistants. Our highly trained laboratory professionals include ASCP-certified medical technicians, medical laboratory technicians, histotechnicians, a certified hematology specialist, one certified veterinary technician, and one foreign-certified medical technician. State-of-the-art clinical laboratory equipment includes automated hematology, clinical chemistry, coagulation, and urinalysis and microbiology analyzers. Our histology laboratory has been renovated and updated with new tissue-processing and slide-staining equipment.

## PATHOLOGY SERVICES

Angell's Pathology staff takes pride in delivering rapid and accurate test results to contribute to the diagnosis, treatment, management, and/or prognosis of disease in our veterinary patients. We offer clinically oriented pathology services. We are interested in individual cases, encourage clinical correlates and feedback, and welcome case consultations via phone or email. Our anatomic and clinical pathologists maintain high-quality service through detailed reports, practical case comments, and competitive turnaround time. When necessary, we consult other specialists about the more challenging disease processes. Select cases are reviewed in biweekly pathology rounds, allowing open discussion among pathologists, general practitioners, veterinary specialists, residents, interns, and veterinary technicians.

Stained and/or unstained glass slides from tissue aspirates, swabs, impression smears, fluids, bone marrow, joint taps, etc., are evaluated by our board-certified veterinary clinical pathologist. Fluid assessment, including automated cell count and cytologic examination of body cavity effusion or cerebrospinal fluid, is also offered. Surgical biopsies or tissue samples from necropsy cases submitted in 10 percent neutral buffered formalin are processed by our in-house histology laboratory, and then they are evaluated by our board-certified veterinary anatomic pathologist. We perform several in-house histochemical stains, and, when necessary to achieve a diagnosis, special stains are applied to cases at no additional cost to the submitter.

We strive to deliver high-quality, accurate results within 24 to 48 hours (excluding weekends) of the time we receive the sample. Turnaround times for items requiring additional processing—such as decalcifying of bone for histopathology—are slightly longer.

In addition to cytology and histopathology, Angell Pathology offers hematology, clinical chemistry, coagulation, urinalysis, microbiology, and parasitology diagnostic services. For a complete list of available tests, submission forms, or sample requirements, please contact us at 617-541-5014 or visit our website at [angell.org/lab](http://angell.org/lab).



---

# PATHOLOGY: NECROPSY

---

The Pathology Service at Angell Animal Medical Center is pleased to offer necropsy services to primary care veterinarians and their clients.

## WHY SUBMIT TO ANGELL'S NECROPSY SERVICE?

At Angell Pathology, we understand that sometimes questions remain unanswered at the time of a pet's death. A necropsy examination may provide answers to some of these questions. Goals of necropsy include determining the cause of death, evaluating the extent of disease, identifying underlying or concurrent disease processes that may have influenced a pet's clinical signs or response to treatment, and educating the individuals (clients, veterinarians, technical staff, and pathologists) involved in the pet's care. The detailed, comprehensive necropsy report includes an interpretive comment to address specific concerns posed by the submitter. As with any pathology submission, select necropsy cases will be reviewed in monthly pathology rounds, allowing open discussion among pathologists, general practitioners, veterinary specialists, residents, interns, and veterinary technicians.

## NECROPSY SERVICES OFFERED

Full necropsies can be performed on dogs, cats, and small exotic pets (such as rabbits, ferrets, reptiles, and birds) by a board-certified anatomic pathologist at Angell Animal Medical Center. The necropsy examination will include histopathology of collected tissue samples at the pathologist's discretion. Ancillary tests (e.g., bacterial culture or immunohistochemistry) will result in an additional charge to the submitter. It is important to note that Angell Pathology requires all pets submitted for necropsy to be cremated following the procedure; ashes can be returned to the owner if requested at the time of submission.

## TURNAROUND TIME & ADDITIONAL INFORMATION

Necropsies are performed Monday through Friday at Angell Pathology. Contact the laboratory at 617-541-5014 to confirm pathologist availability before referring a case. Final results are reported within seven to 14 days to allow additional processing (such as decalcifying of bone) if necessary.

For a complete list of available tests, submission forms, or sample requirements, please contact us at 617-541-5014 or visit our website at [angell.org/lab](http://angell.org/lab).

## SUBMITTING A NECROPSY CASE

- All necropsy submissions must be accompanied by a necropsy requisition form, which can be completed by the submitting veterinarian and is available on our website at [angell.org/lab](http://angell.org/lab) or by contacting us at 617-541-5014
- Suppose an owner brings a deceased pet to Angell for necropsy examination without a necropsy form completed and signed by their veterinarian. In that case, the owner will be seen by an Angell veterinarian through the emergency service.
- Necropsy is most valuable when performed promptly following death (less than 12 hours). However, it may still yield relevant information if performed within 24 to 48 hours of death, depending on postmortem preservation. If a pet cannot be brought to Angell immediately following death, it is recommended to keep the body cool (refrigerated) but not frozen. Refrigeration will reduce, but will not eliminate, postmortem decomposition, whereas freezing can introduce significant artifact, often preventing a histopathologic diagnosis.
- The deceased pet should be transported to Angell by the client, veterinarian, or a representative of the veterinarian. This individual will be required to sign a necropsy release form at the time of submission.
- Please clearly indicate on the necropsy requisition form if an infectious disease is suspected, so appropriate precautions can be taken, and testing can be performed if indicated. Specific examples include but are not limited to rabies and other potentially zoonotic diseases.

## IMPORTANT POINTS ABOUT NECROPSY FOR THE VETERINARIAN AND PET OWNER

- There is no guarantee that the cause of death will be determined in every case
- Reduced sample quality, such as occurs with postmortem decomposition, can preclude a final diagnosis
- The pet's body will not be released to the veterinarian/owner following necropsy. Angell Pathology requires cremation, with the option of the pet's ashes being returned to the owner.
- Ancillary tests, such as bacterial culture or toxicology testing, can result in additional charges to be paid by the submitter
- Microscopic examination of tissues (histopathology) and collection of tissue samples for ancillary tests will occur at the pathologist's discretion
- Necropsy samples, findings, and/or photographs may be used for teaching purposes, quality-control programs, or scientific publication



---

# SURGERY

---

Phone: 617-541-5048 | Fax: 617-989-1660 | [surgery@angell.org](mailto:surgery@angell.org) | [angell.org/surgery](http://angell.org/surgery)



**Lori Agulian, DVM**  
Waltham  
[lagulian@angell.org](mailto:lagulian@angell.org)



**Sue Casale, DVM, DACVS-SA**  
**Orthopedic and Soft Tissue**  
[scasale@angell.org](mailto:scasale@angell.org)



**Michael Pavletic**  
**DVM, DACVS-SA**  
**Soft Tissue**  
Service Director  
[mpavletic@angell.org](mailto:mpavletic@angell.org)



**Jennifer Peterson-Levitt**  
**DVM, DACVS-SA**  
Waltham  
[jpetersonlevitt@angell.org](mailto:jpetersonlevitt@angell.org)



**Nicholas Trout**  
**MA, VET MB, DACVS-SA, ECVS**  
**Orthopedic and Soft Tissue**  
[ntrout@angell.org](mailto:ntrout@angell.org)

## OVERVIEW

The Angell Surgery staff members are dedicated full time to surgery and have extensive surgical experience with a broad knowledge base in orthopedic and soft tissue surgery. We take pride in the large pool of dedicated doctors who work and collaborate together for the individual patient. The large, experienced veterinary staff at Angell work collaboratively to diagnose and manage of sick and injured patients referred to our hospital.

Angell's Surgery Service is equipped with state-of-the-art equipment for a wide range of orthopedic and soft tissue procedures. Veterinarians are welcome to visit Angell, and a tour can be arranged with one of our surgical staff members. We are happy to provide complimentary telephone and email consultations to our referring partners.





---

# SURGERY

---

## SURGERY SERVICES

### Orthopedic Surgery

- Cruciate Ligament Repair (TPLO, TTA, Extracapsular)
- Fracture Repair
- Arthroscopic Examination/Procedures
- Limb Prosthetics
- Total Hip Replacement
- Corrective Joint Surgery
- Acquired/Congenital Limb Deformity Repair
- Pulse-Vet Shock Wave Therapy–Muscle and Tendon Injuries

### Surgical Oncology Services/Reconstructive Surgery

- Biopsy and Staging of Neoplasms
- In-Hospital Consultations with Oncology & Radiation Therapy Services
- Laser-Assisted Surgery
- Ligasure Surgical Unit
- Tumor Resection and Reconstruction
- Skin and Subcutaneous Tissues
- Oral/Facial/Nasal
- Ear Canal/Pinna
- Cervical
- Thoracic/Abdominal Wall Reconstruction
- Paw/Digits/Metacarpal–Metatarsal Pads

### Upper Respiratory Surgery

- Laryngeal Paralysis Tie-Back Procedure
- Soft Palate
- Stenotic Nares
- Tracheal Collapse
- Nasal Cavity Disease
- Nasal Planum Disease

### Otic Surgery

- Ear Canal Ablation
- Lateral/Vertical Canal Resection
- Tumors/Trauma of the Pinna
- Bulla Osteotomy Procedures

### Cervical Surgery

- Salivary Gland
- Laryngeal
- Tracheostomy Procedures
- Esophageal Procedures
- Thyroid Tumors
- Parathyroid Tumors

### Thoracic Surgery

- Pulmonary
- Cardiovascular
- Thoracic Wall Reconstruction

### Abdominal Surgery

- Gastric
- Small Intestine
- Large Intestine/Rectum
- Hepatic/Gallbladder
- Spleen, Pancreas, Adrenal
- Urinary Tract, Upper and Lower
- Thoracic Wall Reconstruction

### Plastic & Reconstructive Surgery

- Skin Flaps
- Skin Grafts
- Muscle and Myocutaneous Flaps
- Foot Pad Flaps/Grafting Techniques
- Comprehensive Wound Management
- Problematic Wound Closure
- Esophageal Reconstruction
- Thoracic and Abdominal Wall Reconstruction

### Neurosurgery

- Brain and Spinal Tumors
- Spinal Fractures
- Disc Disease
- Compressive Spinal Lesions

### Dental/Oral Surgery

- Comprehensive Dental Care – Angell’s Dentistry Service
- Maxillary and Mandibular Tumors
- Oronasal Fistulas
- Laser-Assisted Techniques

### Minimally Invasive Surgery

- Laparoscopy (Ovariectomy, Gastropexy, Cryptorchid Testicles, Biopsy, etc.)
- Thoracoscopy (Biopsy, Pericardial Windows, etc.)
- Arthroscopy (Knee, Shoulder, etc.)

### Laser Surgical Procedures

- Tumor Resection
- Oral – Nasal Surgery

---

# URGENT CARE

---

Phone: 781-902-8400 | [urgentcare@angell.org](mailto:urgentcare@angell.org) | [angell.org/urgentcare](https://angell.org/urgentcare)



**Natasha Pakravan, DVM**

[npakravan@angell.org](mailto:npakravan@angell.org)



**Julie Shields, DVM**

[jshields@angell.org](mailto:jshields@angell.org)

## OVERVIEW

In addition to our Emergency & Critical Care service, the MSPCA-Angell West (Waltham, MA) offers an Urgent Care service for dogs and cats. Clients can call up to one day in advance to book an Urgent Care appointment. Our team can help clients discern if their animal's condition is an Urgent Care or Emergency case. Urgent care for exotic animals is also available through our Avian and Exotic service in Waltham.

Established to treat less critical cases when appropriate staff is scheduled, this is an appointment-based service, not a walk-in service.

Appointments for dogs and cats are available Monday through Friday, 8am to 6pm.

Urgent care appointments for exotic animals can be made by calling 617-989-1561.











## 24/7 EMERGENCY & CRITICAL CARE

BOSTON: 617-522-5011 | WALTHAM: 781-902-8400

### BOSTON AND WALTHAM

AVIAN & EXOTIC MEDICINE  
P: 617-989-1561 F: 617-989-1613  
[avianexotic@angell.org](mailto:avianexotic@angell.org)  
[angell.org/avianandexotic](http://angell.org/avianandexotic)

BEHAVIOR  
P: 617-989-1520 F: 617-989-1627  
[behavior@angell.org](mailto:behavior@angell.org)  
[angell.org/behavior](http://angell.org/behavior)

DERMATOLOGY  
P: 617-524-5733 F: 617-989-1613  
[dermatology@angell.org](mailto:dermatology@angell.org)  
[angell.org/dermatology](http://angell.org/dermatology)

DIAGNOSTIC IMAGING  
P: 617-541-5139 F: 617-989-1617  
[diagnosticimaging@angell.org](mailto:diagnosticimaging@angell.org)  
[angell.org/diagnosticimaging](http://angell.org/diagnosticimaging)

INTERNAL MEDICINE  
P: 617-541-5186 F: 617-989-1657  
[internalmedicine@angell.org](mailto:internalmedicine@angell.org)  
[angell.org/internalmedicine](http://angell.org/internalmedicine)

SURGERY  
P: 617-541-5048 F: 617-989-1660  
[surgery@angell.org](mailto:surgery@angell.org)  
[angell.org/surgery](http://angell.org/surgery)

URGENT CARE\*  
P: 781-902-8400 F: 781-622-1410  
[urgentcare@angell.org](mailto:urgentcare@angell.org)  
[angell.org/urgentcare](http://angell.org/urgentcare)

### BOSTON ONLY

ANESTHESIOLOGY  
P: 617-541-5048 F: 617-989-1660  
[anesthesia@angell.org](mailto:anesthesia@angell.org)  
[angell.org/anesthesia](http://angell.org/anesthesia)

CARDIOLOGY  
P: 617-541-5038 F: 617-989-1653  
[cardiology@angell.org](mailto:cardiology@angell.org)  
[angell.org/cardiology](http://angell.org/cardiology)

DENTISTRY  
P: 617-522-7282 F: 617-522-4885  
[dentistry@angell.org](mailto:dentistry@angell.org)  
[angell.org/dentistry](http://angell.org/dentistry)

NEUROLOGY  
P: 617-541-5140 F: 617-989-1666  
[neurology@angell.org](mailto:neurology@angell.org)  
[angell.org/neurology](http://angell.org/neurology)

ONCOLOGY  
P: 617-541-5136 F: 617-989-1668  
[oncology@angell.org](mailto:oncology@angell.org)  
[angell.org/oncology](http://angell.org/oncology)

OPHTHALMOLOGY  
P: 617-541-5095 F: 617-989-1647  
[ophthalmology@angell.org](mailto:ophthalmology@angell.org)  
[angell.org/eyes](http://angell.org/eyes)

PATHOLOGY\*\*  
P: 617-541-5014 F: 617-522-7356  
[pathology@angell.org](mailto:pathology@angell.org)  
[angell.org/lab](http://angell.org/lab)

\* Available only in Waltham

\*\* Service is located in Boston, but serves both Boston & Waltham

### FOR ADDITIONAL REFERRAL ASSISTANCE

Boston Phone: 617-522-5011 | Boston Fax: 617-989-1635

Waltham Phone: 781-902-8400 | Waltham Fax: 781-622-1410

Phone numbers apply for both Boston and Waltham (with the exception of Emergency & Critical Care)